

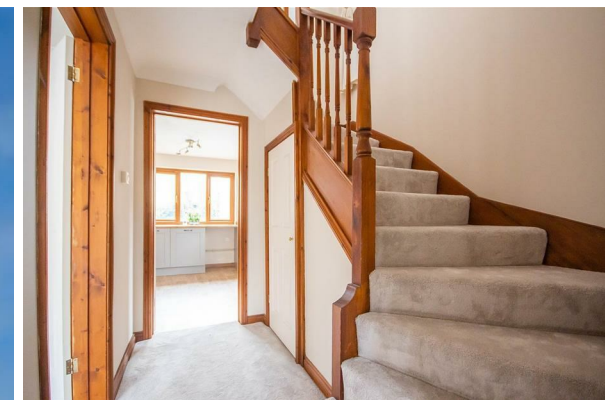


Redmayne Arnold & Harris  
estate agents, letting agents & surveyors

[rah.co.uk](http://rah.co.uk)



TO LET



36 Plumian Way, Balsham, Cambridge, CB21 4EG

£1,600 PCM



Directions

THE PROPERTY

Nestled in the charming village of Balsham, this delightful detached house on Plumian Way offers a perfect blend of comfort and style. With four spacious bedrooms, this property serene environment while still being close to local amenities.

Upon entering, you are greeted by a spacious hallway which follows to three inviting reception rooms, providing ample space for relaxation and entertainment. The property boasts two well-appointed bathrooms and four generously sized bedrooms.

Outside, the house features parking for two vehicles, a valuable asset in this desirable location. The surrounding area is known for its picturesque landscapes and friendly community, making it an excellent choice for those looking to settle in a peaceful yet vibrant neighbourhood.

This property will be managed directly by the landlord.

- EPC rating: E
- Council Tax Band: E
- Deposit: £1,840
- Holding Deposit: £390
- Minimum 12 Month Tenancy

SITUATION

